

Topcon MC-Mobile ROI analysis

Complete return on investment for the three-phase workflow: Measure, Design, Build

SUMMARY

ROI CALCULATIONS





Summary

The Topcon MC-Mobile solution represents a revolutionary 3-in-1 system that transforms traditional construction workflows by integrating measuring, machine control, and verification capabilities into a single, portable platform. This comprehensive ROI analysis demonstrates how the MC-Mobile system delivers measurable returns across the three critical phases of construction: Measure, Design, and Build.

This ROI analysis is a general informational analysis for the small to mid-size contracting space and is based on current market conditions, assumed average project scope and site conditions and typical industry metrics. Actual results may vary based on actual market and project specific conditions, and implementation effectiveness. Topcon makes no warranties, expressed or implied, regarding the suitability or completeness of the ROI and/or reliability of the data used.

Key investment highlights

Payback period:
8-12 months for typical operations

ROI range:
180-350% over 3 years

*All pricing in USD

Productivity gains:
25-40% improvement in project completion times

Cost reduction:
15-30% reduction in operational expenses

Phase 1 ROI analysis: MEASURE

Technology overview

Quantified benefits - MEASURE phase

MC-Mobile is a 3-in-1 system for layout, machine control, and grade checking. It combines key technology from surveying and machine control to help you perform layout and in-field design, eliminating traditional surveying bottlenecks and reducing dependency on external surveying services.

Surveying efficiency gains

| Traditional process | MC-Mobile process | Time savings | Cost impact |
|---|--|---------------------------------------|--|
| External surveyor + crew (2-3 people, 4-6 hours) | Single operator (1 person, 1-2 hours) | 60-75% reduction in surveying time | \$800-1,200 per project vs. \$200-300 per project |

Eliminated surveying dependencies

| | |
|---|---|
| Reduced external surveyor costs: | \$15,000-25,000 annually for mid-size contractors |
| Schedule reliability: | 90% reduction in surveying-related delays |



Enhanced accuracy and quality



Measurement precision:

Measurement precision:

±2mm accuracy vs. ±10-15mm traditional methods

Rework reduction:

40-60% decrease in measurement-related rework

Quality assurance:

Real-time verification drastically reduces rework

Financial impact - MEASURE phase

Annual savings for 50-project operation:

External surveying cost elimination:

\$20,000

Reduced project delays:

\$18,000

Decreased rework costs:

\$15,000

Total annual measure phase savings:

\$53,000

Phase 2 ROI analysis: DESIGN

Technology overview

Quantified benefits - DESIGN phase

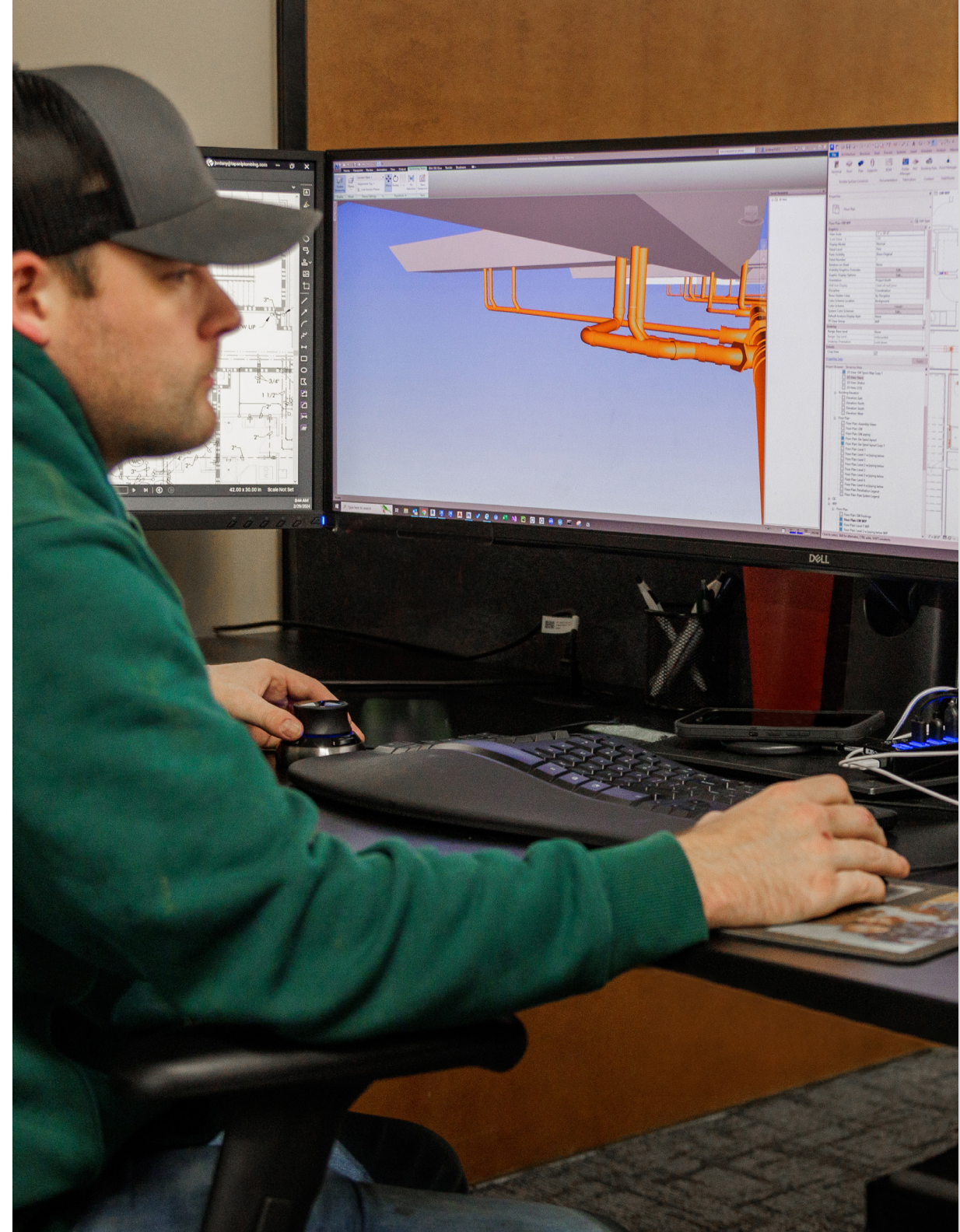
The MC-Mobile system enables real-time, on-site design modifications and eliminates the traditional design-build workflow gaps. Operators can utilize modular components for a wide range of applications, including grade checking, creating designs on the fly, and self-performing site layouts without traditional staking.

Design iteration speed

| Traditional process | MC-Mobile process | Time savings | Project acceleration |
|--|---|---|--------------------------------|
| Office design → field verification → revision cycle (2-5 days) | Real-time field design and modification (2-4 hours) | 85-90% reduction in design iteration cycles | 1-3 days faster project starts |

Engineering service reduction

| | |
|---|--|
| Reduced design service costs: | 30-50% decrease in external engineering fees |
| In-house capability enhancement: | Expanded service offerings for clients |
| Competitive advantage: | Ability to handle complex projects previously requiring specialized services |



SUMMARY

ROI CALCULATIONS

Enhanced accuracy and quality



Change order management:

Real-time adaptability:
Immediate response to field conditions

Change order efficiency:
70% faster processing of design changes

Client satisfaction:
Improved project delivery and communication

Financial impact - DESIGN phase

Annual benefits for mid-size contractor:

Reduced engineering service costs:
\$25,000

Faster project completion bonuses:
\$30,000

Increased project capacity (15% more projects):
\$45,000

Total annual design phase benefits:
\$100,000

Phase 3 ROI analysis: BUILD

Technology overview

Quantified benefits - BUILD phase

Solution provides user experience and performance benefits of full-size machine control guidance solutions for compact excavators, skid steers and compact track loaders, bringing enterprise-level precision to smaller equipment operations.

Machine productivity enhancement

| | |
|-------------------------------|--|
| Operator efficiency: | 35-50% improvement in earthmoving productivity |
| Equipment utilization: | 95% uptime vs. 75-80% traditional operations |

Labor cost optimization

| | |
|--------------------------------------|---|
| Skilled operator requirement: | Reduces dependency on highly experienced operators |
| Training time: | 75% reduction in operator training requirements |
| Multi-machine flexibility: | Displays and other components are designed to be easily shared across numerous machines in owned or rental fleet environments |



Enhanced accuracy and quality



Quality and precision benefits:

First-pass quality:
90-95% accuracy vs. 70-80% traditional methods

Material waste reduction:
15-25% decrease in over-excavation and material waste

Compaction optimization:
Precise grade control reduces compaction requirements

Financial impact - BUILD phase

Annual Benefits for fleet operation:

Increased productivity value:
\$80,000

Reduced material waste:
\$18,000

Labor efficiency gains:
\$35,000

Total annual build phase benefits:
\$133,000



topconpositioning.com

Images and illustrations are for visualization purposes and may not reflect your region. Product and service availability may vary by country. Please contact your local representative for details.

Specifications subject to change without notice.
© 2025. Topcon Corporation. All rights reserved. 08/25